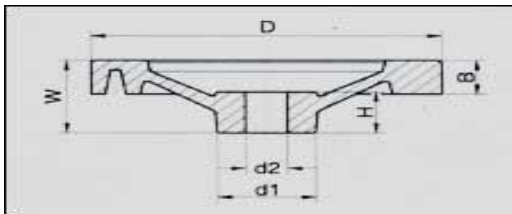
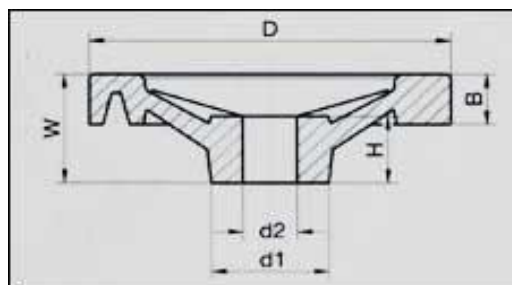


Dimensions and Specifications



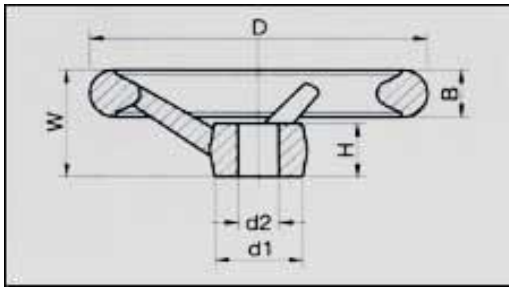
SOLID HANDWHEEL - HW01

D	W	d1	d2	B	H	Type
80	25	27	8	11	15	HW.01.80.08
			10			HW.01.80.10
100	30	28	10	14	17	HW01.100.10
			14			HW01.100.14
125	33	31	12	15	18	HW01.125.12
			14			HW01.125.14
140	41	38	14	18	24	HW01.140.14
			20			HW01.140.20
200	54	46	20	20	34	HW01.200.20
			24			HW01.200.24



TWO SPOKE HANDWHEEL - HW02

D	W	d1	D2	B	H	Type
80	32	24	8	18	16	HW02.080.08
			10			HW02.080.10
100	36	28	10	20	18	HW02.100.10
			14			HW02.100.14
125	33	31.5	12	15.5	18	HW02.125.12
			14			HW02.125.14
140	43	39	14	20	24	HW02.140.14
			20			HW02.140.20
175	50	44	20	20	30	HW02.175.20
			22			HW02.175.22
200	45	40	22	18	25	HW02.200.22
			24			HW02.200.24
250	62	48	24	27	28	HW02.250.24
			26			HW02.250.26



THREE SPOKE HANDWHEEL - HW03

D	W	d1	d2	B	H	Type
100	34	26	10 14	15	17	HW03.100.10 HW03.100.14
125	37	28	12 16	16	19	HW03.125.12 HW03.125.16
140	43	38	14 20	21	23	HW03.140.14 HW03.140.20
160	47	42	20 22	22	26	HW03.160.20 HW03.160.22
200	54	46	16 22	22	33	HW03.200.16 HW03.200.22
160*	47	38	20 22	22	26	HW03.160.20 HW03.160.22
200*	52	46	16 22	22	26	HW03.200.16 HW03.200.22
225*	55	50	20 24	26	30	HW03.225.20 HW03.225.24
300*	62	58	24 26	28	35	HW03.300.24 HW03.300.26

* Marked are available only in Cast Iron.